

## Székesfehérvár Székesfehérváron

457 229 HUF

Located in Székesfehérvár, near the southern exit of M7 highway, newly built warehouses / manufacturing halls of various size are for rent!

Warehouse unit sizes varies from 193 sqm to 1143sqm.

### Features:

- newly built, modern, insulated building
- each warehouse unit has one air-conditioned office and one toilet (expandable on request)
- separate personal entrance for each hall unit
- electric capacity: 3x32 A (expandable!)
- warehouse heating: with gas-powered radiant heating or industrial AC
- 6 - 7 m internal height
- 5t / m2 floor load capacity
- electric industrial doors (5m x 4.5m)

video: <https://youtu.be/zwhZCT8KSL4>

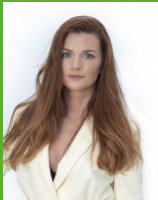
Warehouse rent: 3.8 - 4.3 EUR +VAT/sqm/month

Office rent: 6.5 EUR +VAT/sqm/month

Common cost: 0.87 EUR +VAT/sqm/month

(depending on the leased size of the unit and the rental period, a tailor-made offer is presented in each and every case!)

ID number	368107
Type	For rent - Storage
Space	267 m <sup>2</sup>
Condition	Newly built
Structure	Concrete
Heating	Other
Parking	Self-parking
Year of construction	2022



**Göbolyös Ágnes**  
**+36-70-383-9754**

[a.gobolyos@gdn-ingatlan.hu](mailto:a.gobolyos@gdn-ingatlan.hu)

FOR RENT

