

Székesfehérvár Sóstó Ipari Parkban

2 525 676 HUF

Bip-003955. A new logistics warehouse and production facility with dock doors for rent (either as a whole or divided) in Sóstó Industrial Park Székesfehérvár, located next to the M7 motorway!
The property is easily accessible by truck, car, and local public transport.

Available rental area: 6000 sqm (can be subdivided)

Features:

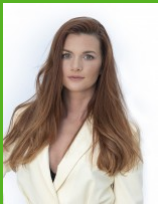
- ▶ Total area: 9046 sqm (can be divided into smaller areas!)
- ▶ Office and social block area: to be developed upon request
- ▶ Usable ceiling height: 7.6m
- ▶ Industrial doors: 6 ground-level industrial doors (4m x 4.45m) and 5 dock doors (3m x 3.5m)
- ▶ Heating: gas-powered thermo-ventilators
- ▶ Industrial floor load capacity: 5t
- ▶ Electric capacity: 3x300A

This modern hall meets all contemporary needs and is perfectly suited for storage/logistics activities as well as industrial/manufacturing operations.

Rental Fee:

Warehouse: 4.6 EUR + VAT/month + utilities + deposit
Office/social block: 5,7 EUR + VAT/month + utilities + deposit
Service fee: 0,8 EUR + VAT/sqm/month
(prices are indicative, a customized offer ...)

ID number	377114
Type	For rent - Storage
Space	6 023 m ²
Condition	Newly built
Structure	Concrete
Heating	Other
Parking	Self-parking
Year of construction	2024



Göbolyös Ágnes
+36-30-397-6489

a.gobolyos@gdn-ingatlan.hu

FOR RENT

